



KENYA MARINE AND FISHERIES RESEARCH INSTITUTE



Kenya Pelagic Longline Fish Species Catalogue

Developed by

Geoffrey Odhiambo and Edward Kimani

Mombasa, January 2021



COPYRIGHT

The Kenya pelagic longline fish catalogues was prepared by the Marine and Coastal Fisheries Research Department of Kenya Marine and Fisheries Research Institute (KMFRI).

Copyright © 2021 Kenya Marine and Fisheries Research Institute

Reproduction of this publication for educational or other non-commercial purposes is authorized without prior written permission from the copyright holder provided the source is fully acknowledged.

Reproduction of this publication for resale or other commercial purposes is prohibited without prior written permission of the copyright holder.

Copies of this report are available from:

The Director
Kenya Marine and Fisheries Research Institute
P.O. Box 81651– 80100
Mombasa, KENYA
Telephone: + Tel: 254-020-2353904
E-mail: director@kmfri.co.ke
Internet: <http://www.kmfri.co.ke>

DISCLAIMER

The designations employed and presentations of material throughout this publication do not imply the expression of any opinion, whatsoever, on the part of the Kenya Marine and Fisheries Research Institute or its partner institutions concerning the legal status of any country, districts, city or area or of its authorities, or concerning the delimitation of its frontiers or boundaries. The views expressed in this publication are those of the authors and do not necessarily reflect the views of the KMFRI or its partner institutions. Mention of the names of firms or commercial products does not imply their endorsement.

Document certification

Certification by Assistant Director Marine and Coastal Fisheries Research:

I hereby certify that this report has been done under my supervision and submitted to the Director.

Signature:

A handwritten signature in blue ink, appearing to be 'Nina Wambiji', written over a dotted line.

Date: June 25, 2020

Name:

Dr. Nina Wambiji (PhD)

Acknowledgements

The information used to develop this catalogues was collected during the Kenya Marine Fishery Stock Project conducted between April and October 2020 funded by the Government of Kenya, through the Ministry of Agriculture, Livestock, Fisheries and Cooperatives and the State Department of Fisheries, Aquaculture and Blue Economy. Many members of staff at Kenya Marine and fisheries research institute (KMFRI) and Kenya Fisheries Service (KeFS) were involved in the preparation and implementation of the surveys. We thank Prof. James Njiru and Dr. Rennison Ruwa Director KMFRI and Deputy Director KMFRI for regular advice and timely assistance whenever there was need to facilitate the research activities for the project. We appreciate the FV Seamar II Captains, the officers and the crew for the cooperation they provided while conducting the cruises at sea. The Pweza Fishing Limited availed the vessel and crew for the surveys.

Catalogue of Pelagic longline fish in Kenya

Marine pelagic fish species are an important part of the marine fisheries resources of Kenya. KMFRI has been undertaking fisheries surveys to characterize the fish stocks, determine the catch rates and sustainability of the pelagic fishery resources during the 2020-2021 Financial year. Five surveys were undertaken between April and October 2020 onboard the vessel FV Seamer II covering the entire Kenya EEZ. This catalogue lists the 45 species of fish encountered during the five surveys. The catalogue is intended for use by fisheries observers and the fish crew as a handy reference to identify the fish encountered during other surveys as well as during normal fishing operations to facilitate accurate recording of catch data and other biological information relevant to the use and management of the stocks. The catalogue will be updated regularly as new species are encountered in the fishery.



Xiphias gladius (Swordfish)



Prionace glauca (Blue shark)



Thunnus obesus (Bigeye Tuna)



Carcharhinus longimanus
(Oceanic whitetip)



Thunnus albacares
(Yellowfin Tuna)



Isurus oxyrinchus (Shortfin Mako)



Carcharhinus falciformis
(Silky shark)



Sphyrna lewini
(Scalloped hammerhead shark)



Alopias superciliosus
(Bigeye thresher shark)



Galeocerdo cuvier
(Tiger shark)



Terapturus audax
(Striped marlin)



Alepisaurus brevirostris
(Shortsnouted lancetfish)



Ruvettus pretiosus



Lepidocybium flavobrunneum



Lamna nasus

(Oil fish)



Isurus paucus

(Longfin mako shark)

(Oil fish)



Terapturus angustirostris

(Shortbill spearfish)

(*Lamna nasus*)



Makaira nigricans

(Blue marlin)



Dasyatis violacea

(Pelagic stingray)



Carcharhinus plumbeus

(Sandbar shark)



Istiophorus platypterus

(Indo-Pacific sailfish)



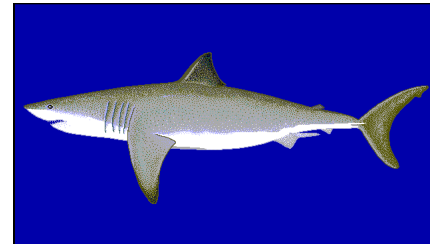
Alepisaurus ferox

(Longsnouted lancetfish)



Taractichthys steindachneri

(Sickle pomfret)



Carcharodon carcharias

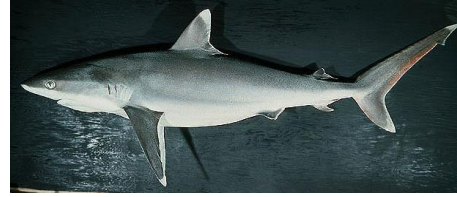
(Great white shark)



Coryphaena hippurus
(Common dolphinfish)



Lampris guttatus
(Opahs)



Carcharhinus albimarginatus
(Silvertip shark)



Makaira indica
(Black marlin)



Sphyraena barracuda
(Great barracuda)



Macolor niger
(White snapper)



Sphyraena qenie
(Blackfin barracuda)



Thunnus alalunga
(Albacore)



Caranx sexfasciatus
(Bigeye trevally)



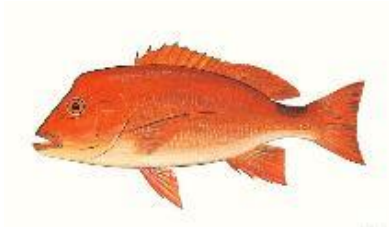
Gemphylus serpens
(Snake mackerel)



Sphyrna zygaena
(Smooth hammerhead shark)



Mobula kuhlii
(Devilray)



Lutjanus sanguineus
Humphead snapper



Caranx ignobilis
Great trevally



Trichiurus lepturus
(Largehead hairtail)



Drepane longimana
(Concertina fish)



Acanthocybium solandri
(Wahoo)



Epinephelus multinotatus
(White-blotched grouper)



Lutjanus campechanus
(Northern red snapper)



Thyrsitoides marleyi
(Black snoek)



Caranx tille
(Tille trevally)